



« Shaping Perfect Workspace »

## 3D Acoustic wall & ceiling tiles

Open the realms of acoustic design flexibility with 3D; a modular acoustic wall tile designed to create a contemporary finish and add simple and effective acoustic control to any interior environment.

Being the only Class A tile on the market, 3D truly looks as good as it sounds. And with no minimum order quantity and a three week lead-time, achieving acoustic comfort has never been easier.

Suitable for residential, office, education, retail and hospitality spaces; redefine your environment with 3D.

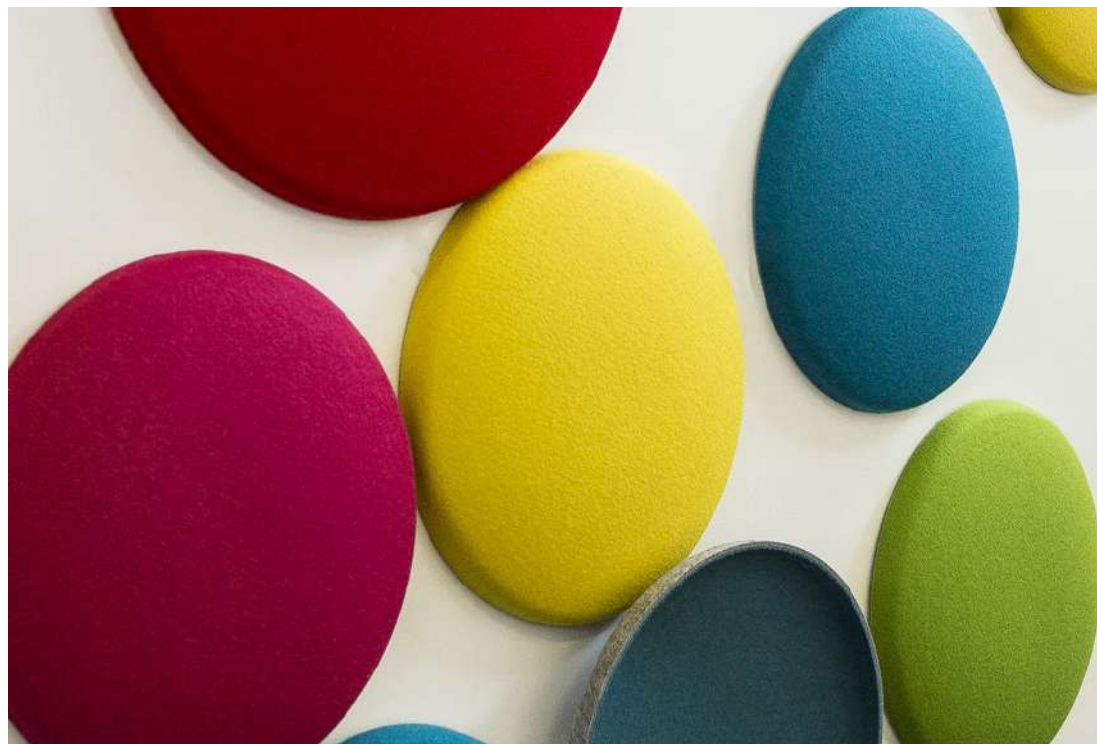


## WALL MOUNTED

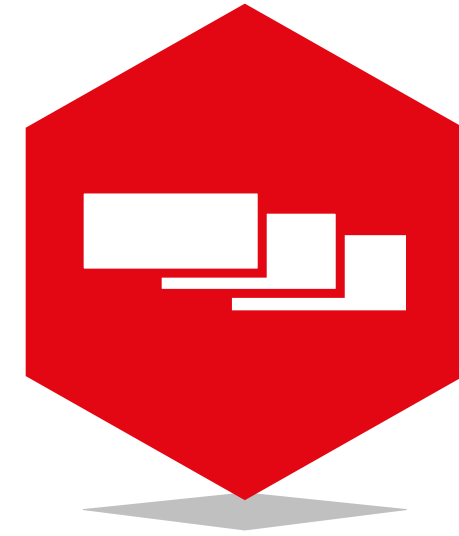


Acoustic Wall Panels are attractive, cost-effective and easy-to-install modular tiles designed to reduce reverberation and improve acoustic comfort.

The ideal choice for offices, meeting rooms, call centres, atriums, restaurants, classrooms, school halls and especially areas utilizing AV, teleconferencing and video conferencing equipment.



## CEILING MOUNTED



Suspended sound absorbent horizontal panels. Simple to install – fixing kits and instructions provided.

Lightweight acoustic baffle manufactured from high density fibre glass with a white painted speckled finish with excellent sound absorption characteristics.





»

## 3D Classic Range

»



**Classic Slope**  
550mm x 550mm x 50mm



**Classic Groove**  
550mm x 550mm x 50mm



**Classic Wave**  
550mm x 550mm x 50mm

»

## 3D Classic Range

»



**Classic Block**  
825mm x 550mm x 50mm



**Classic Square**  
550mm x 550mm x 50mm

»

»  
**3D**  
Lines Range  
»



**Lines Mono**  
550mm x 550mm x 50mm



**Lines Trio**  
550mm x 550mm x 50mm



**Lines Multiple**  
550mm x 550mm x 50mm

»  
**3D**  
Lines Range  
»



**Lines Rib**  
550mm x 550mm x 50mm



**Lines Swirl**  
550mm x 550mm x 50mm



**Lines Geo**  
550mm x 550mm x 50mm

»

## 3D Button Range

»



**Button Small**  
Ø 400mm, depth: 50mm



**Button Invert**  
Ø 400mm, depth: 50mm



**Button Big**  
Ø 550mm, depth: 65mm

»

## 3D Arc Range

»



**Arc Wave**  
500mm x 500mm x 40mm



**Arc Plain**  
500mm x 500mm x 40mm



**Arc Curve**  
500mm x 365mm x 40mm

# 3D Air

**Air is a high-end acoustic element for interior design. Easy to install and modify, and when needed also easy to move and adapt to new uses.**

Air elements will smoothly assimilate into the space - divide it or expand it. It's light to handle but sturdy in it's role as a peacemaker in noisescapes and as a complement to interior designs.

### Air –Technical & Acoustic Information

Effective sound absorber, Absorption class A (EN ISO 11654) Panels on both sides of the element. Furniture sheet in the middle.  
Weight 12 kg/ m2 (sheet + panels) 1 module = 55 x 55 cm

### Installation

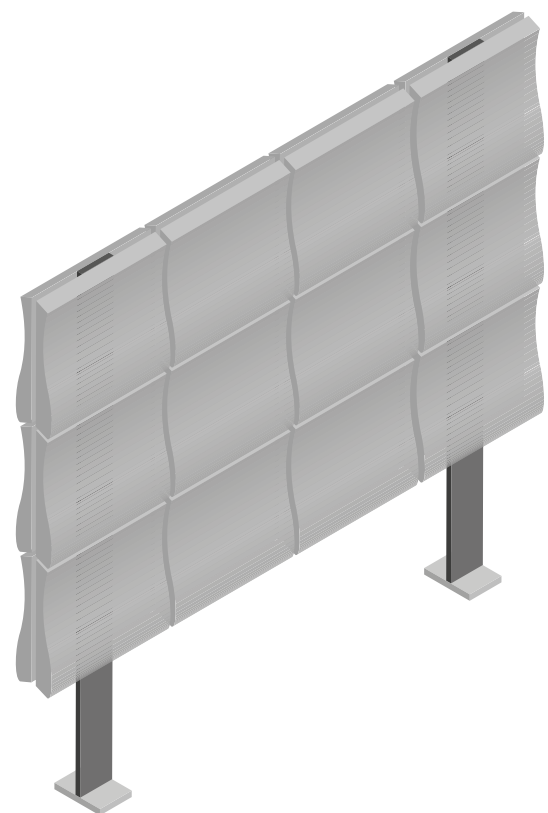
Wire suspension, free-standing or desk-fixed element. Wire suspension element can be hung to any height.

### Choose

Any panel type sized 55 x 55 cm. Any colour of multiple Softencolor options.

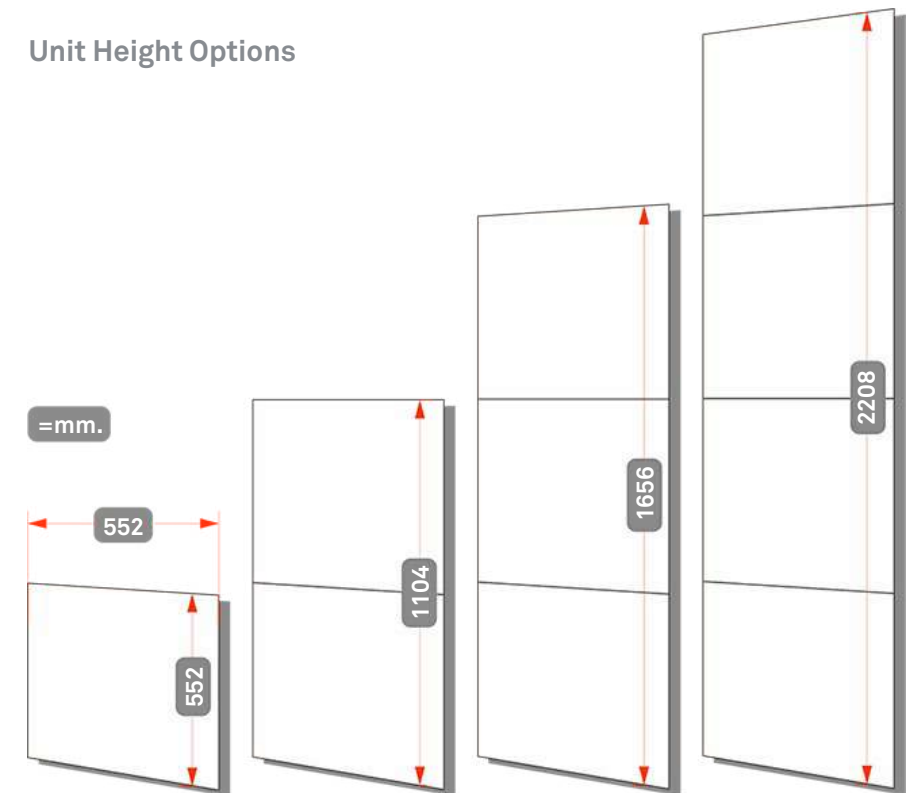
### Colours

Rotate panels or change their places freely on the element. Panels are easy to loose and reattach. Installation of wire suspension elements always to the supportive structure of the building.

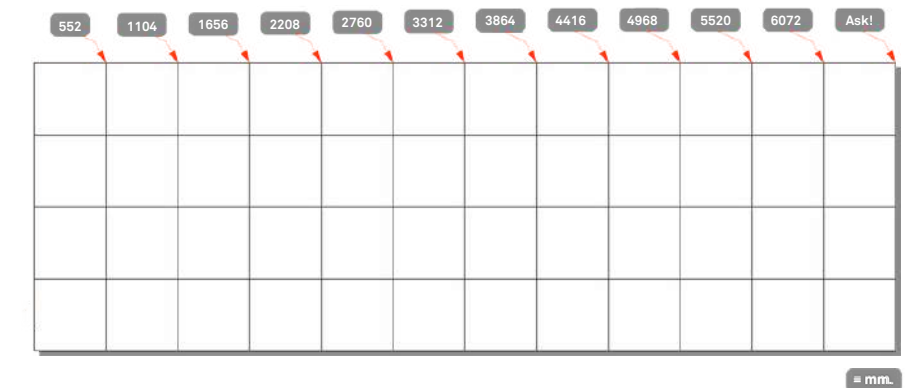


# 3D Unit specifications

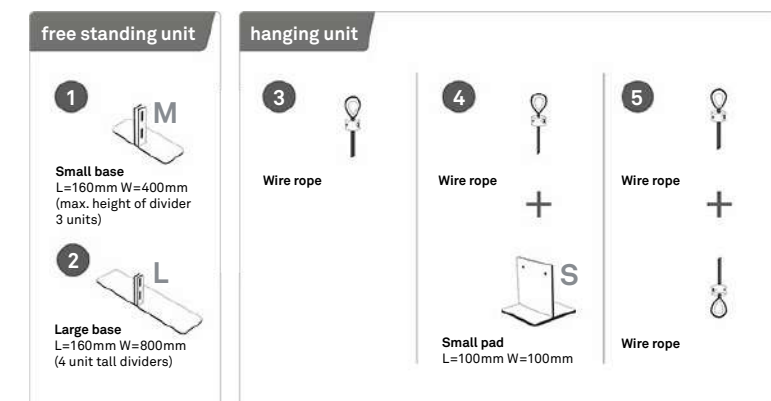
### Unit Height Options



### Unit Width Options

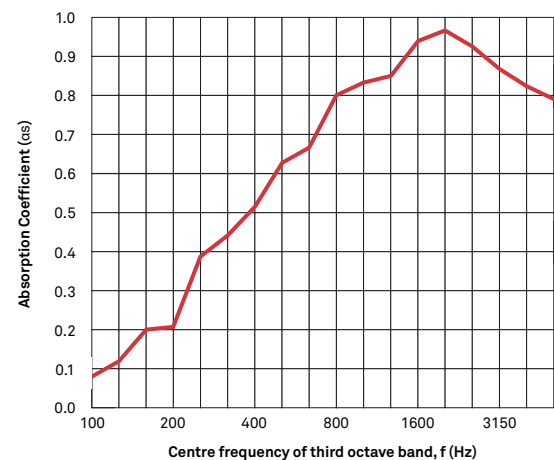


### Fixing Options





# 3D Acoustic Performance



Determination of acoustic absorption coefficient according to ISO 354:2003

Specimen: Wallpanel 550x550x50

Specimen area:	10.6 m <sup>2</sup>
Surface mass:	1.5 kg/m <sup>2</sup>
Test room volume:	155m <sup>3</sup>

Area of room boundaries:	179m <sup>2</sup>
Test date:	10.10.2007
Test file identification:	T101007A

	Without	With Specimen
Temperature of test room:	21°C	21°C
Relative humidity:	61%	61%
Atmospheric pressure:	102 kPa	102 kPa

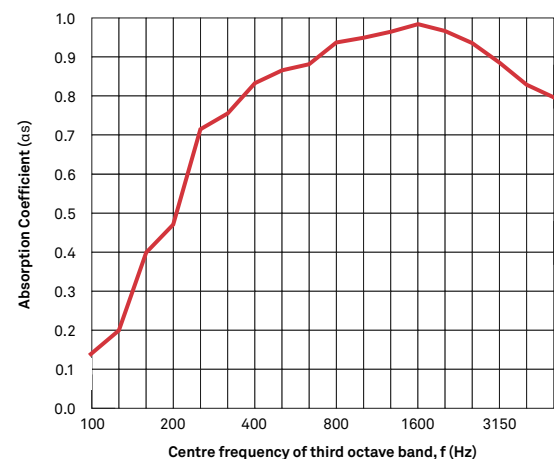
**Third octave band results:**

Frequency (Hz)	100	125	160	200	250	315	400	500	630	800	1000	1250	1600	2000	2500	3450	4000	5000
αs (sab)	0.07	0.12	0.20**	0.21**	0.38	0.44	0.52	0.62	0.66	0.79	0.83	0.85	0.94	0.96	0.92	0.87	0.82	0.78

**Octave band results:**

Frequency (Hz)	63	125	250	500	1000	2000	4000
αs (sab)	0.04	0.13**	0.35**	0.60	0.82	0.94	0.82

\*\* Total absorption area of the empty test room is higher than ISO 354 requires. The uncertainty of the test result is higher than ISO 354 expects. NRC: 0.70 Absorption class: C (EN ISO 11654)



Determination of acoustic absorption coefficient according to ISO 354:2003

Specimen: Wallpanel 550x550x50  
Ewona-wool 25mm filling

Specimen area:	10.6 m <sup>2</sup>
Surface mass:	2.3 kg/m <sup>2</sup>
Test room volume:	155m <sup>3</sup>

Area of room boundaries:	179m <sup>2</sup>
Test date:	10.10.2007
Test file identification:	T101007B

	Without	With Specimen
Temperature of test room:	21°C	21°C
Relative humidity:	61%	61%
Atmospheric pressure:	102 kPa	102 kPa

**Third octave band results:**

Frequency (Hz)	100	125	160	200	250	315	400	500	630	800	1000	1250	1600	2000	2500	3450	4000	5000
αs (sab)	0.14	0.21	0.40**	0.47**	0.71	0.76	0.83	0.86	0.87	0.94	0.95	0.96	0.98	0.95	0.93	0.88	0.84	0.80

**Octave band results:**

Frequency (Hz)	63	125	250	500	1000	2000	4000
αs (sab)	0.06	0.25**	0.64**	0.85	0.95	0.95	0.84

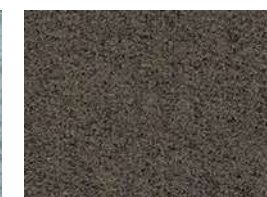
\*\* Total absorption area of the empty test room is higher than ISO 354 requires. The uncertainty of the test result is higher than ISO 354 expects. NRC: 0.85 Absorption class: A (EN ISO 11654)

# Colour Options

## Camira



**Blazer**  
View Options



**Blazer Lite**  
View Options



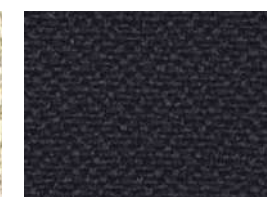
**Cara**  
View Options



**Corrosion**  
View Options



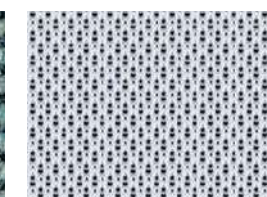
**Era**  
View Options



**Lucia**  
View Options



**Main Line Flax**  
View Options



**Nexus**  
View Options



**Patina**  
View Options



**Rivet**  
View Options

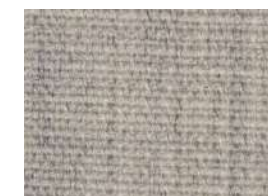


**Sonus**  
View Options



**Synergy**  
View Options

## Kvadrat



**Canvas 2**  
View Options



**Clara 2**  
View Options



**Divina 3**  
View Options



**Memory 2**  
View Options



**Remix 2**  
View Options



**Steelcut Trio 3**  
View Options

Other fabric finishes may be available. Please contact [sales@creatif.org.uk](mailto:sales@creatif.org.uk) for more information.





Head Office  
Unit 2, Hunslet Business Park,  
National Road, Leeds LS10 1TE

London Showroom  
79 Clerkenwell Road  
London, EC1R 5AR

T +44 (0) 113 270 1239  
F +44 (0) 113 239 1672  
E info@creatif.org.uk

[www.creatif.org.uk](http://www.creatif.org.uk)